

AMENDED

LOCATED IN GOVERNMENT LOT 2, NE 1/4 SW 1/4,
SECTION 7, T. 21 N., R. 22 E., BOISE MERIDIAN,
LEMHI COUNTY, IDAHO
AMENDED LOT 1 RICHARD LYNN ESTATES

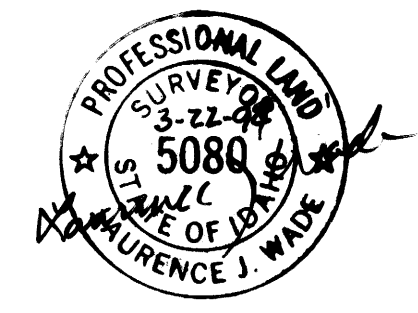


LEGEND

- FOUND 5/8" REBAR WITH PLASTIC CAP - PLS 970
- FOUND 1/2" REBAR WITH PLASTIC CAP - PLS 970
- SET 5/8" X 24" REBAR WITH A PLASTIC CAP MARKED WADE - PLS 5080
- (N. 89° 56' E.) RECORD BEARING AND DISTANCE
- 10 FT. EASEMENT LINE

SURVEYOR'S CERTIFICATE

THIS MAP REPRESENTS A SURVEY MADE FROM EXISTING FIELD EVIDENCE IN CONFORMANCE WITH THE REQUIREMENTS OF CHAPTERS 16 AND 19, TITLE 55, IDAHO CODE.



COUNTY RECORDER'S CERTIFICATE

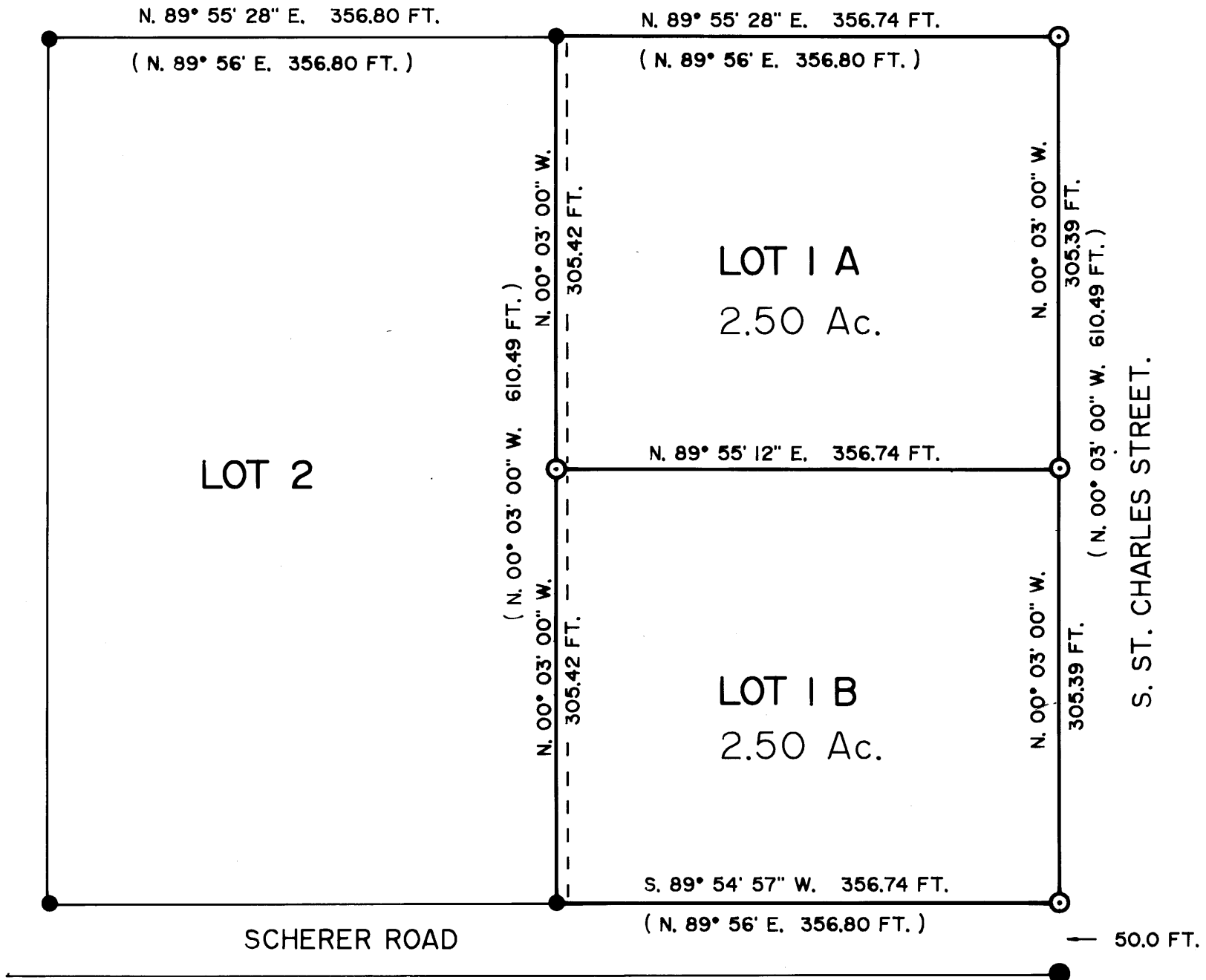
RECORDER OF LEMHI COUNTY
 TIME: 10:46 AM, DAY: 23 MONTH: March 1994
 BK: 5 PG: 5B INST. NO. 222001
 RECORDER: Alberta Friederick
 BY: Sharon Stevens

COUNTY COMMISSIONER'S ACCEPTANCE

THE FOREGOING PLAT WAS DULY ACCEPTED AND APPROVED BY THE BOARD OF COMMISSIONERS OF LEMHI COUNTY, IDAHO, ON THIS 14th DAY OF March 1994.

Cherry Hawley
CHAIRMAN

Alberta Friederick
ATTEST: CLERK



COURTESY LEMHI TITL

WADE SURVEYING
505 GRANITE SALMON, IDAHO
208-756-3070 83467