

#138098

COUNTY RECORDER'S CERTIFICATE

STATE OF IDAHO }
COUNTY OF LEMHI } S.S.

This is to certify that the foregoing plat was filed in the Office of the Recorder of Lemhi County, Idaho on this 23 day of Sept. 1977, at 9:45 A.M. and duly recorded in Plat Book 5 at Page 4-4

Eleanor Alden
EX-OFFICIO RECORDER

COUNTY COMMISSIONER'S ACCEPTANCE

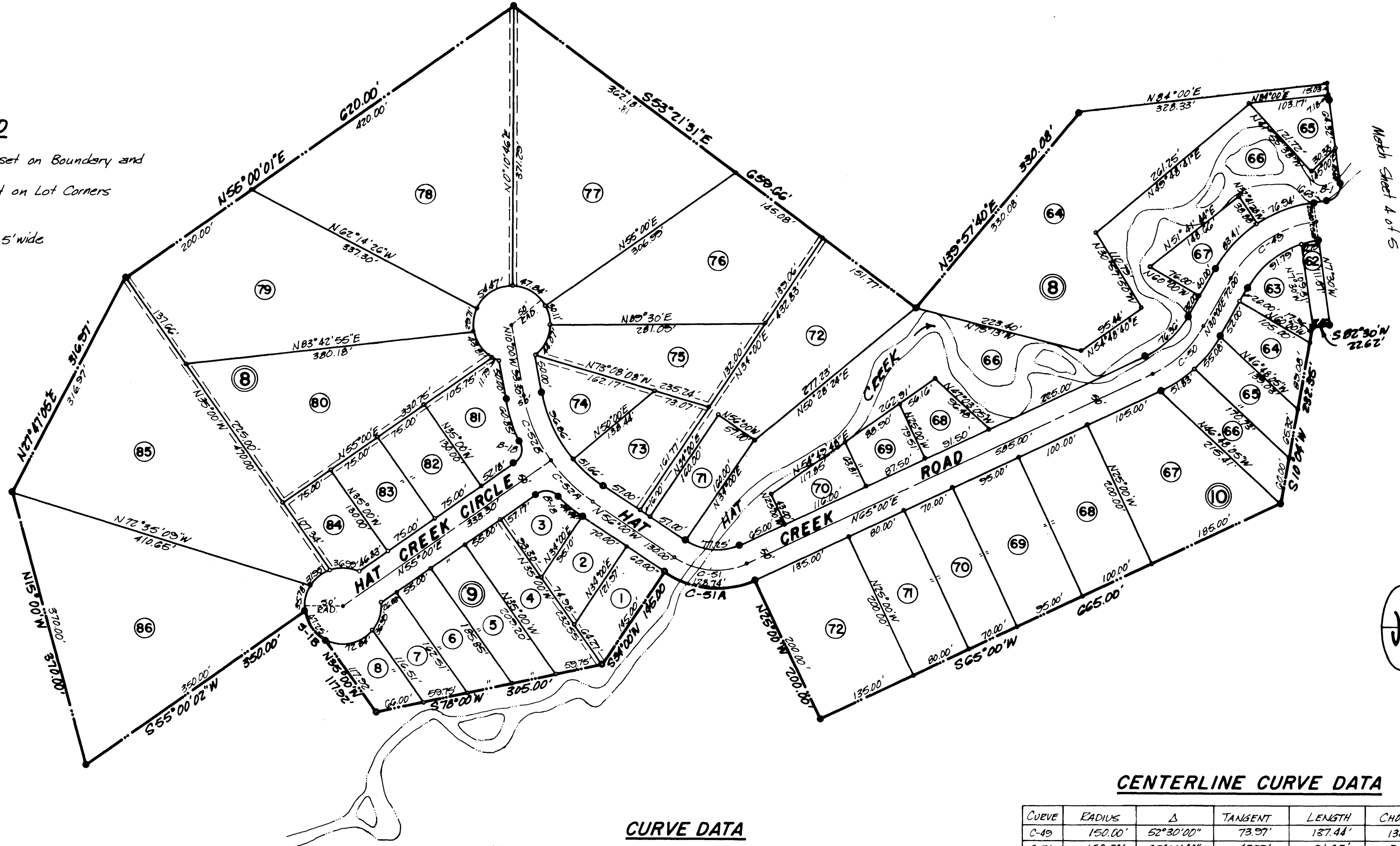
The foregoing plat was duly accepted and approved and maintenance of all public streets was accepted by the Board of County Commissioners of the County of Lemhi, Idaho on this 12 day of Sept. 1977.

Eleanor Alden
ATTEST: CLERK

Jack Weigand
CHAIRMAN

LEGEND

- 5/8" x 30" Steel Bar set on Boundary and Black Corners
- 1/2" x 24" Steel Bar set on Lot Corners
- Boundary Line
- Lot Line
- Utility Easement - 5' wide
- Ⓢ Lot Number
- Ⓣ Block Number



CURVE DATA

CURVE	RADIUS	Δ	TANGENT	LENGTH	CHORD
B-1	20.00'	90° 00' 00"	20.00'	31.42'	28.28'
B-1B	20.00'	79° 50' 00"	16.73'	27.87'	25.67'
C-51A	125.00'	55° 00' 30"	70.74'	128.74'	123.13'
S-1B	50.00'	54° 08' 38"	25.66'	47.25'	45.51'

CENTERLINE CURVE DATA

CURVE	RADIUS	Δ	TANGENT	LENGTH	CHORD
C-49	150.00'	52° 30' 00"	73.97'	137.44'	132.68'
C-50	150.00'	35° 00' 00"	47.29'	91.63'	90.21'
C-51	100.00'	59° 00' 30"	56.50'	102.99'	98.50'
C-52A	210.00'	21° 00' 00"	38.92'	76.97'	76.54'
C-52B	210.00'	25° 00' 00"	46.56'	91.63'	90.00'