

138098

COUNTY RECORDER'S CERTIFICATE

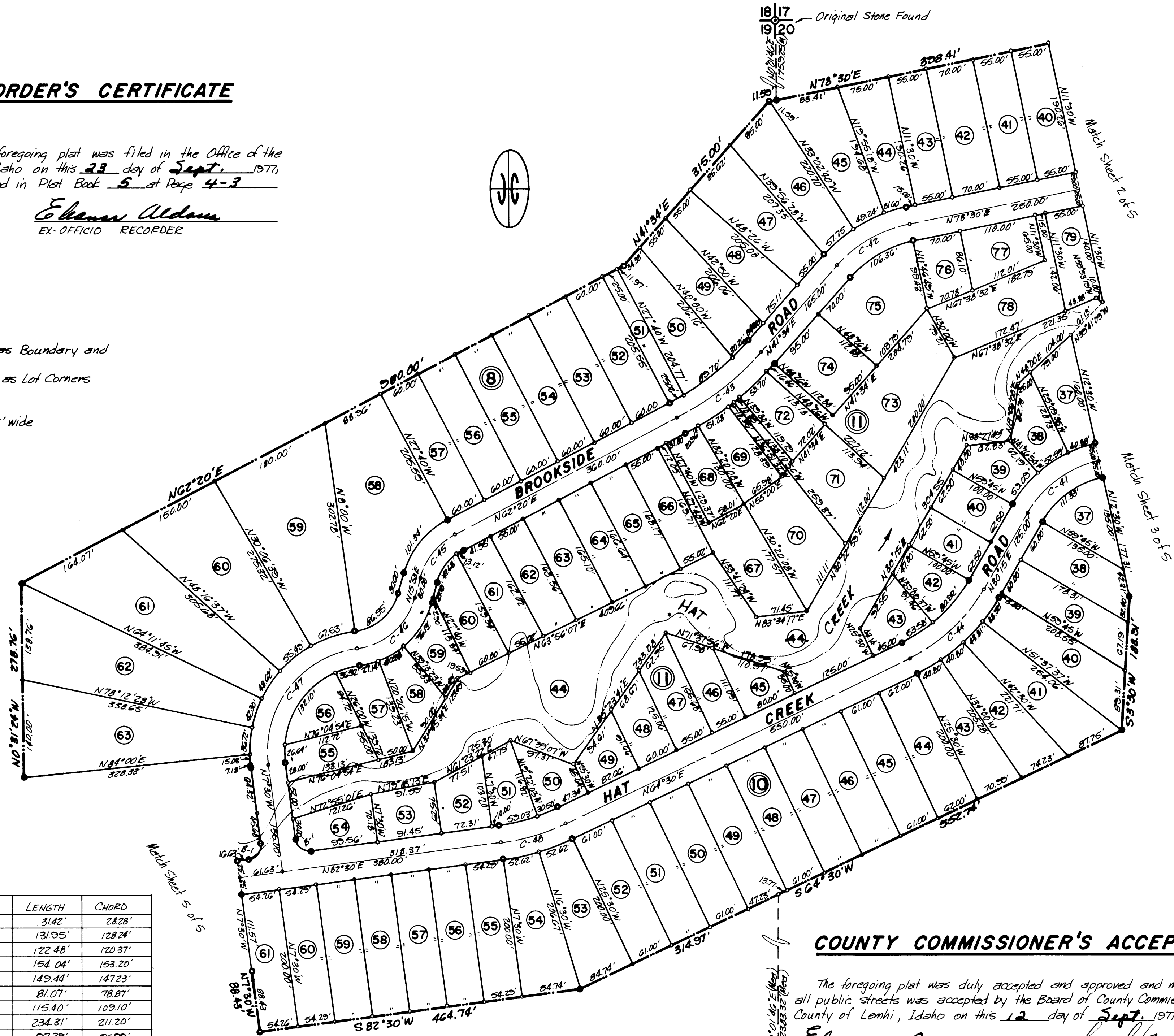
STATE OF IDAHO }
COUNTY OF LEMHI } S.S.

This is to certify that the foregoing plat was filed in the Office of the Recorder of Lemhi County, Idaho on this 23 day of Sept. 1977, at 9:45 A.M. and duly recorded in Plat Book 5 at Page 4-3

Eleanor Aldous
EX-OFFICIO RECORDER

LEGEND

- 3/4" x 30" Steel Bar set as Boundary and Block Corners
- 1/2" x 24" Steel Bar set as Lot Corners
- Boundary Line
- Lot Line
- Utility Easement - 5' wide
- Ⓣ Lot Number
- Ⓢ Block Number



CURVE DATA

CURVE	RADIUS	Δ	TANGENT	LENGTH	CHORD
B-1	20.00'	90°00'00"	20.00'	31.42'	28.28'
C-41	160.00'	47°15'00"	69.98'	131.95'	128.24'
C-42	190.00'	36°56'00"	63.45'	122.48'	120.37'
C-43	425.00'	20°46'00"	77.87'	154.04'	153.20'
C-44	250.00'	34°15'00"	77.03'	149.44'	147.23'
C-45	100.00'	46°27'00"	42.91'	81.07'	78.87'
C-46	100.00'	66°07'00"	65.09'	115.40'	109.10'
C-47	150.00'	89°30'00"	148.70'	234.31'	211.20'
C-48	310.00'	18°00'00"	49.10'	97.39'	96.99'

COUNTY COMMISSIONER'S ACCEPTANCE

The foregoing plat was duly accepted and approved and maintenance of all public streets was accepted by the Board of County Commissioners of the County of Lemhi, Idaho on this 12 day of Sept. 1977.

Eleanor Aldous Jack Ludwig
ATTEST: CLERK CHAIRMAN