

138098

COUNTY RECORDER'S CERTIFICATE

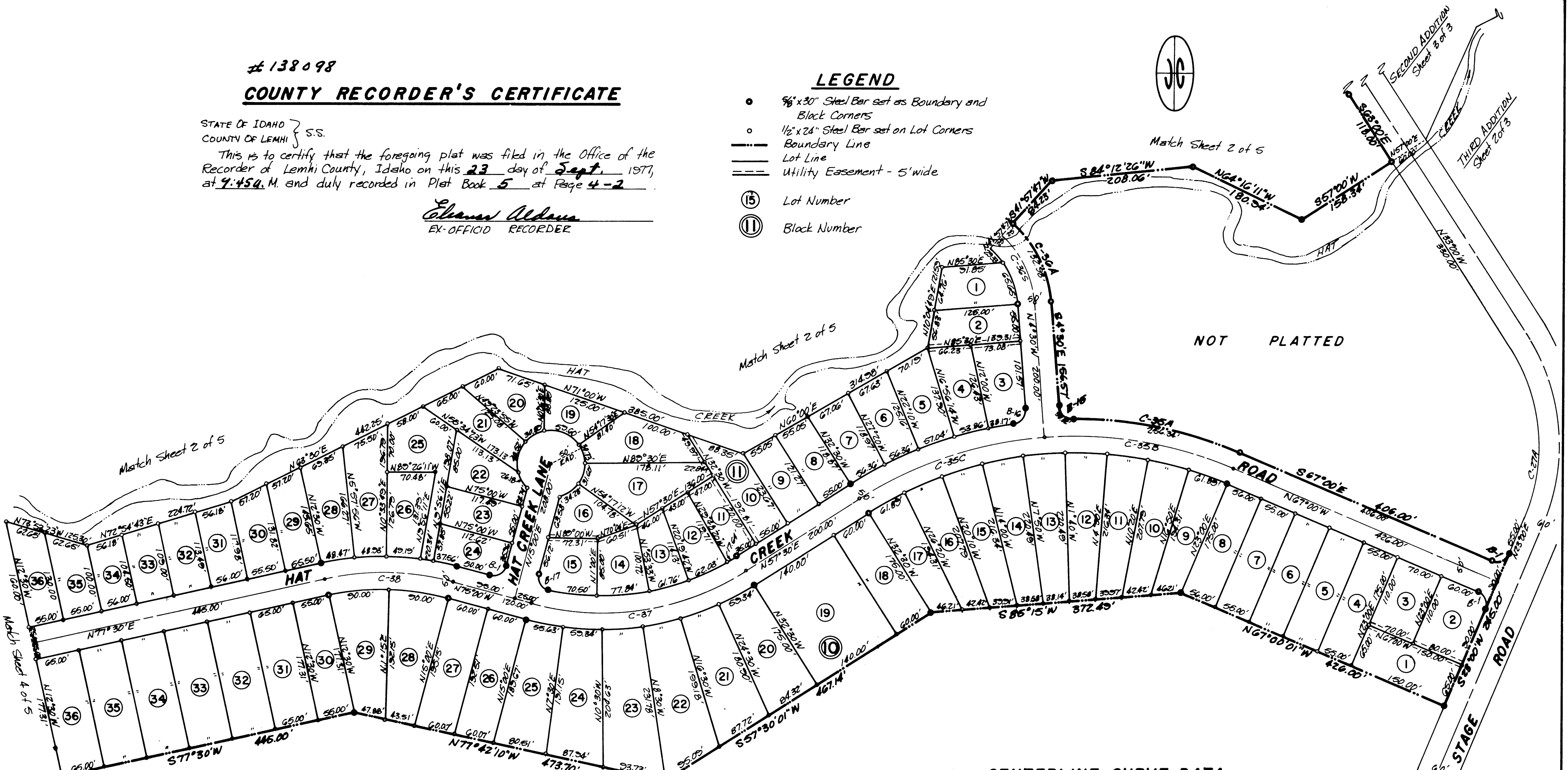
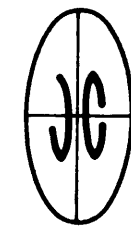
STATE OF IDAHO } S.S.
COUNTY OF LEMHI }

This is to certify that the foregoing plat was filed in the Office of the Recorder of Lemhi County, Idaho on this 23 day of Sept. 1977, at 9:45 A.M. and duly recorded in Plat Book 5 at Page 4-2.

Eleanor Adams
EX-OFFICIO RECORDER

LEGEND

- 5/8" x 30" Steel Bar set as Boundary and Black Corners
- 1/2" x 24" Steel Bar set on Lot Corners
- Boundary Line
- Lot Line
- - - Utility Easement - 5' wide
- Ⓜ Lot Number
- Ⓜ Black Number



NOT PLATTED

CENTERLINE CURVE DATA

CURVE	RADIUS	Δ	TANGENT	LENGTH	CHORD
C-35B	600.00'	27°30'00"	146.82'	287.98'	285.22'
C-35C	600.00'	28°00'00"	149.60'	293.22'	290.31'
C-36S	150.00'	43°32'13"	59.50'	113.98'	111.26'
C-37	400.00'	47°30'00"	176.00'	331.61'	322.20'
C-38	400.00'	27°30'00"	97.88'	191.99'	190.15'

CURVE DATA

CURVE	RADIUS	Δ	TANGENT	LENGTH	CHORD
B-1	20.00'	90°00'00"	20.00'	31.42'	28.28'
B-15	20.00'	96°59'57"	18.65'	30.02'	27.28'
B-16	20.00'	86°59'58"	18.65'	30.02'	27.28'
B-17	20.00'	91°36'47"	20.67'	31.98'	28.68'
C-27A	270.00'	56°00'02"	143.66'	263.90'	253.52'
C-36A	625.00'	23°29'57"	129.99'	256.34'	264.54'
C-36A	175.00'	43°32'13"	69.88'	132.98'	129.80'

COUNTY COMMISSIONER'S ACCEPTANCE

The foregoing plat was duly accepted and approved and maintenance of all public streets was accepted by the Board of County Commissioners of the County of Lemhi, Idaho on this 12 day of Sept. 1977.

Eleanor Adams
ATTEST: CLERK

Jack Weigand
CHAIRMAN

Scale 1"=100'

COURTESY LEMHI TITLE