

173337

173337

**COUNTY RECORDER'S CERTIFICATE**

STATE OF IDAHO }  
COUNTY OF LEMHI } S.S.

THIS IS TO CERTIFY THAT THE FOREGOING PLAT WAS FILED IN THE OFFICE OF THE RECORDER OF LEMHI COUNTY, IDAHO ON THIS 14<sup>th</sup> DAY OF September 1984 AT 1:01 P.M. AND DULY RECORDED IN PLAT BOOK 5 AT PAGE 3

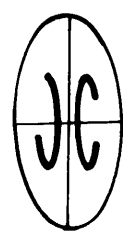
*Alberta Skiderick*  
EX-OFFICIO RECORDER  
by *Joyce Santos, deputy*

**COUNTY COMMISSIONER'S ACCEPTANCE**

THE FOREGOING PLAT WAS DULY ACCEPTED AND APPROVED AND MAINTENANCE OF ALL PUBLIC STREETS WAS ACCEPTED BY THE BOARD OF COUNTY COMMISSIONER OF THE COUNTY OF LEMHI, IDAHO ON THIS 10 DAY OF 1977

*Alberta Skiderick*  
ATTEST: CLERK

*Louie Semich*  
CHAIRMAN



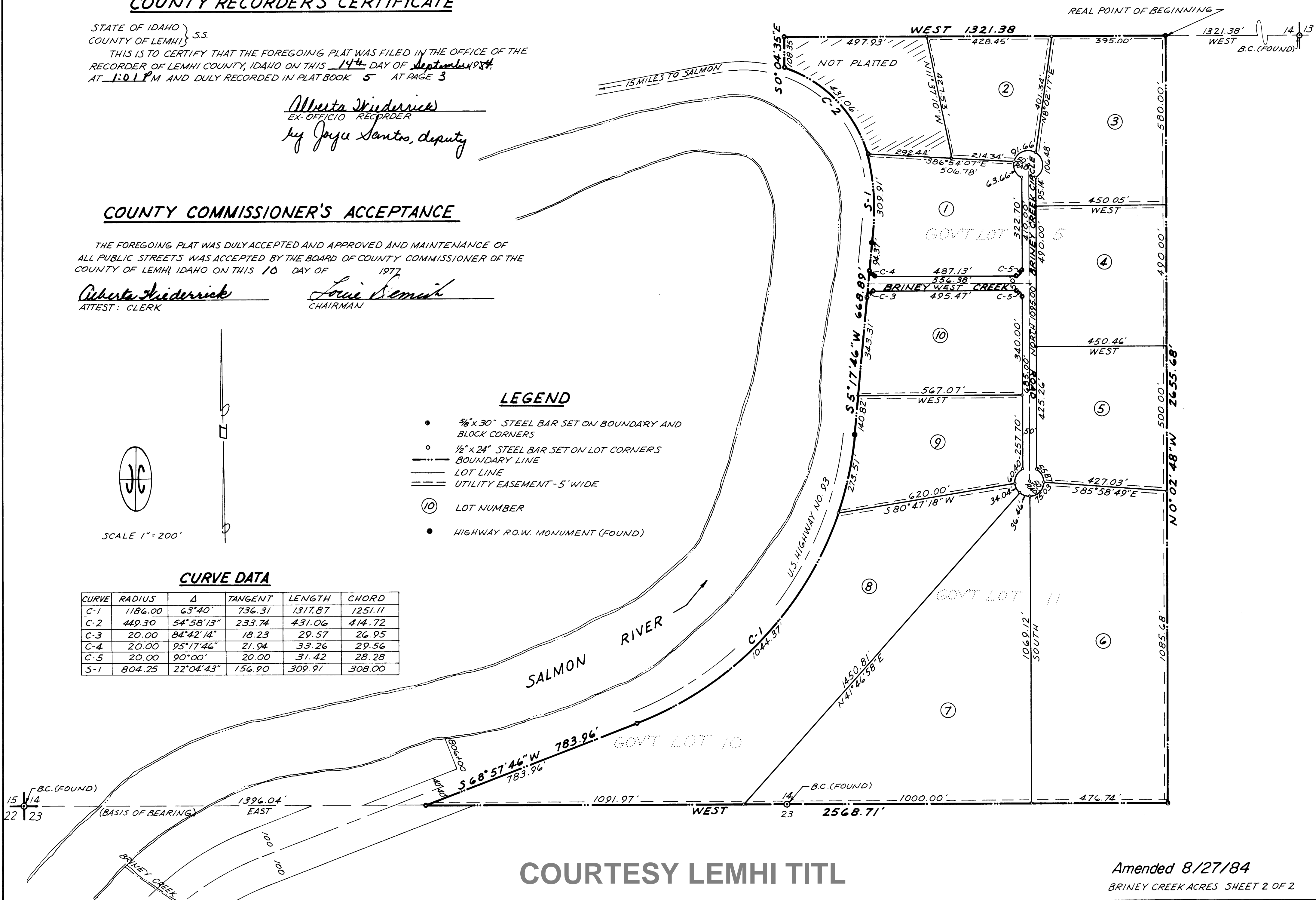
SCALE 1" = 200'

**CURVE DATA**

CURVE	RADIUS	Δ	TANGENT	LENGTH	CHORD
C-1	1186.00	63°40'	736.31	1317.87	1251.11
C-2	449.30	54°58'13"	233.74	431.06	414.72
C-3	20.00	84°42'14"	18.23	29.57	26.95
C-4	20.00	95°17'46"	21.94	33.26	29.56
C-5	20.00	90°00'	20.00	31.42	28.28
S-1	804.25	22°04'43"	156.90	309.91	308.00

**LEGEND**

- 3/8" x 30" STEEL BAR SET ON BOUNDARY AND BLOCK CORNERS
- 1/2" x 24" STEEL BAR SET ON LOT CORNERS
- BOUNDARY LINE
- LOT LINE
- == UTILITY EASEMENT - 5' WIDE
- ⓐ LOT NUMBER
- HIGHWAY R.O.W. MONUMENT (FOUND)



COURTESY LEMHI TITL

Amended 8/27/84  
BRINEY CREEK ACRES SHEET 2 OF 2