

S 89°44'51" E 537.59' M.C.  
S 0°20'53" E 528.15' M.C.

Real Point of Beginning

**COUNTY COMMISSIONER'S ACCEPTANCE**

The foregoing plat was duly accepted and approved and maintenance of all public streets was accepted by the Board of County Commissioners of the County of Lemhi, Idaho on this 9 day of August 1976.

*Eleanor Alden*  
ATTEST: CLERK

*Charles B Kane*  
CHAIRMAN

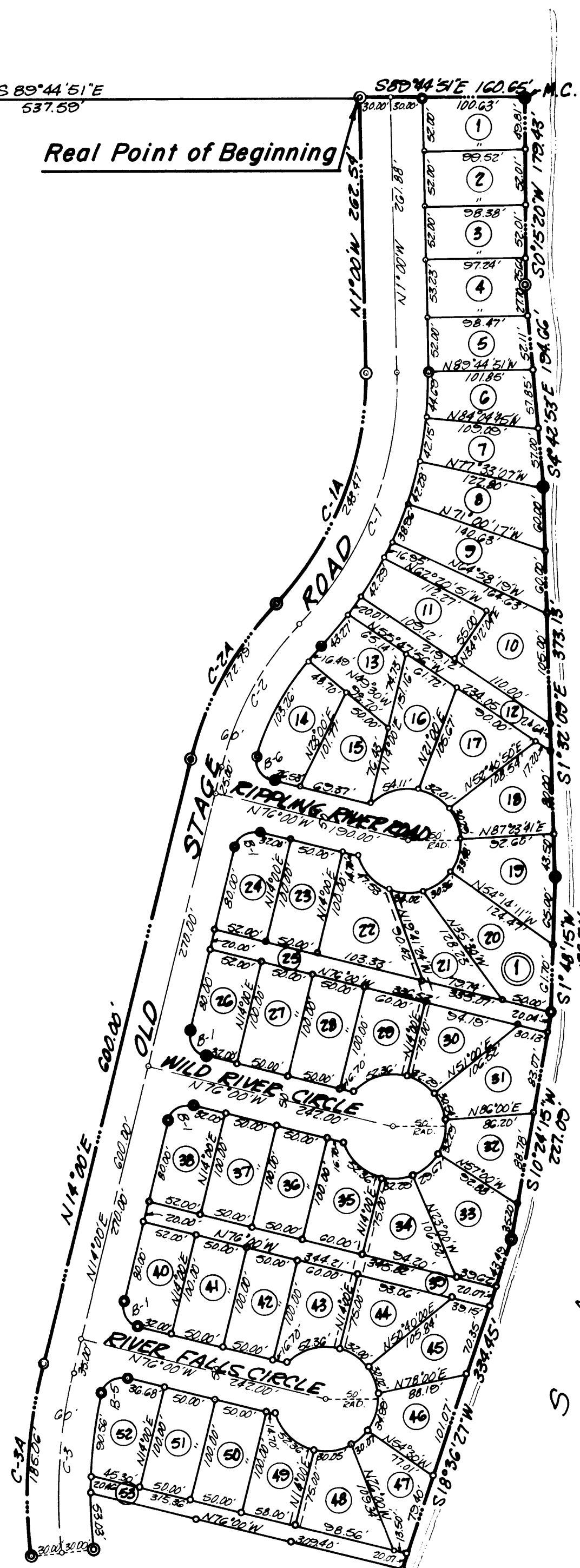
#134929

**COUNTY RECORDER'S CERTIFICATE**

STATE OF IDAHO } SS  
COUNTY OF LEMHI }

This is to certify that the foregoing plat was filed in the Office of the Recorder of Lemhi County, Idaho on this 3rd day of July, 1976, at 2:18 P.M. and duly recorded in Plat Book 4 at Page 60.

*Eleanor Alden*  
EX-OFFICIO RECORDER

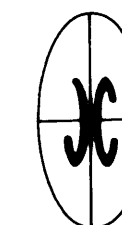


R I V E R

S A L M O N

**LEGEND**

- 5/8" x 30" Steel Bar set on Boundary and Block Corners
- 1/2" x 24" Steel Bar set on Lot Corners
- Boundary Line
- Lot Line
- Utility Easement - 5' wide
- ④ Lot Number
- ① Block Number



**CENTERLINE CURVE DATA**

| CURVE | RADIUS  | Δ         | TANGENT | LENGTH  | CHORD   |
|-------|---------|-----------|---------|---------|---------|
| C-1   | 340.00' | 45°00'00" | 140.83' | 267.04' | 260.22' |
| C-2   | 300.00' | 30°00'00" | 80.38'  | 167.08' | 155.25' |
| C-3   | 500.00' | 20°00'00" | 88.16'  | 174.53' | 173.65' |

**CURVE DATA**

| CURVE | RADIUS  | Δ         | TANGENT | LENGTH  | CHORD   |
|-------|---------|-----------|---------|---------|---------|
| B-1   | 20.00'  | 90°00'00" | 20.00'  | 31.42'  | 28.78'  |
| B-5   | 20.00'  | 00°00'03" | 11.56'  | 20.94'  | 20.00'  |
| B-6   | 20.00'  | 04°35'15" | 21.67'  | 33.02'  | 29.39'  |
| C-1A  | 310.00' | 45°00'00" | 128.41' | 243.47' | 237.26' |
| C-2A  | 330.00' | 30°00'00" | 88.42'  | 172.79' | 170.82' |
| C-3A  | 530.00' | 20°00'15" | 93.48'  | 185.06' | 184.11' |

Match Sheet 3 of 4

COURTESY LEMHI TITL