

AMENDED

LOTS 3 AND 4, BLOCK 2, TOWER CREEK PROPERTIES SUB.
 LOCATED IN THE SW 1/4 NW 1/4, SECTION 17, T. 23 N., R. 22 E.,
 BOISE MERIDIAN, LEMHI COUNTY, IDAHO
 PURPOSE: TO CHANGE THE COMMON BOUNDARY LINE
 BETWEEN LOTS 3 AND 4



LEGEND

- GOVERNMENT STONE CORNER
- SET 5/8" X 24" REBAR WITH 3" ALUM. CAP
- SET 5/8" X 24" REBAR WITH A PLASTIC CAP MARKED WADE PLS 5080
- FOUND 1/2" REBAR

SURVEYOR'S CERTIFICATE

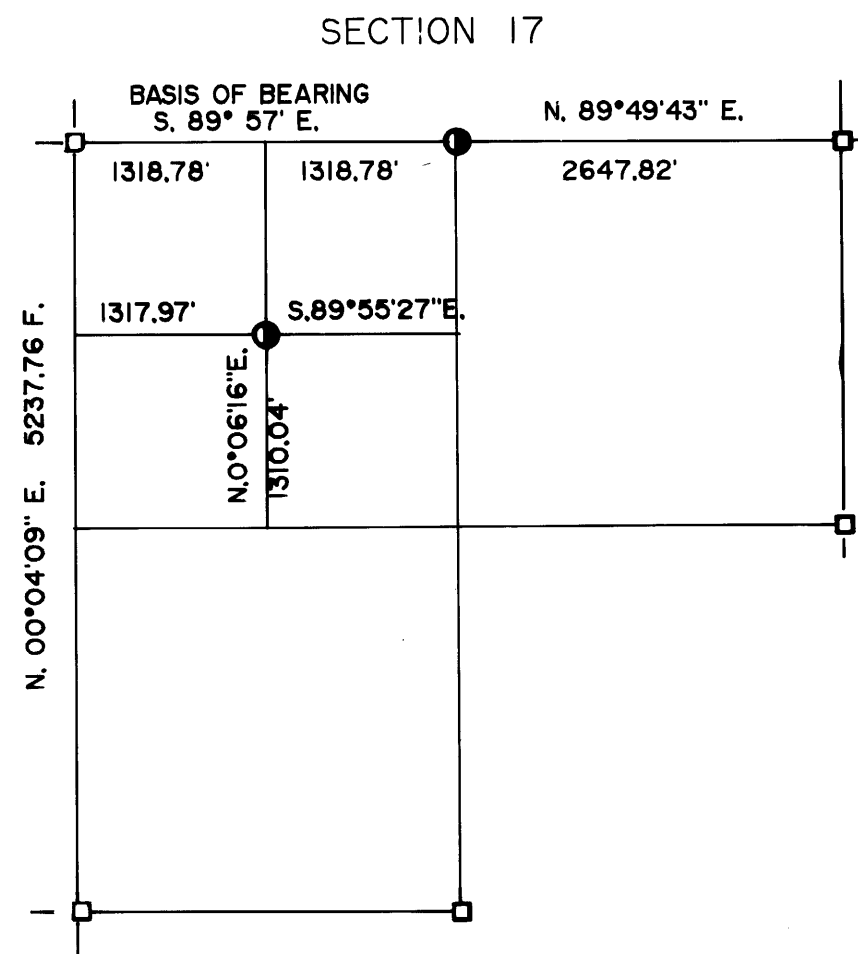
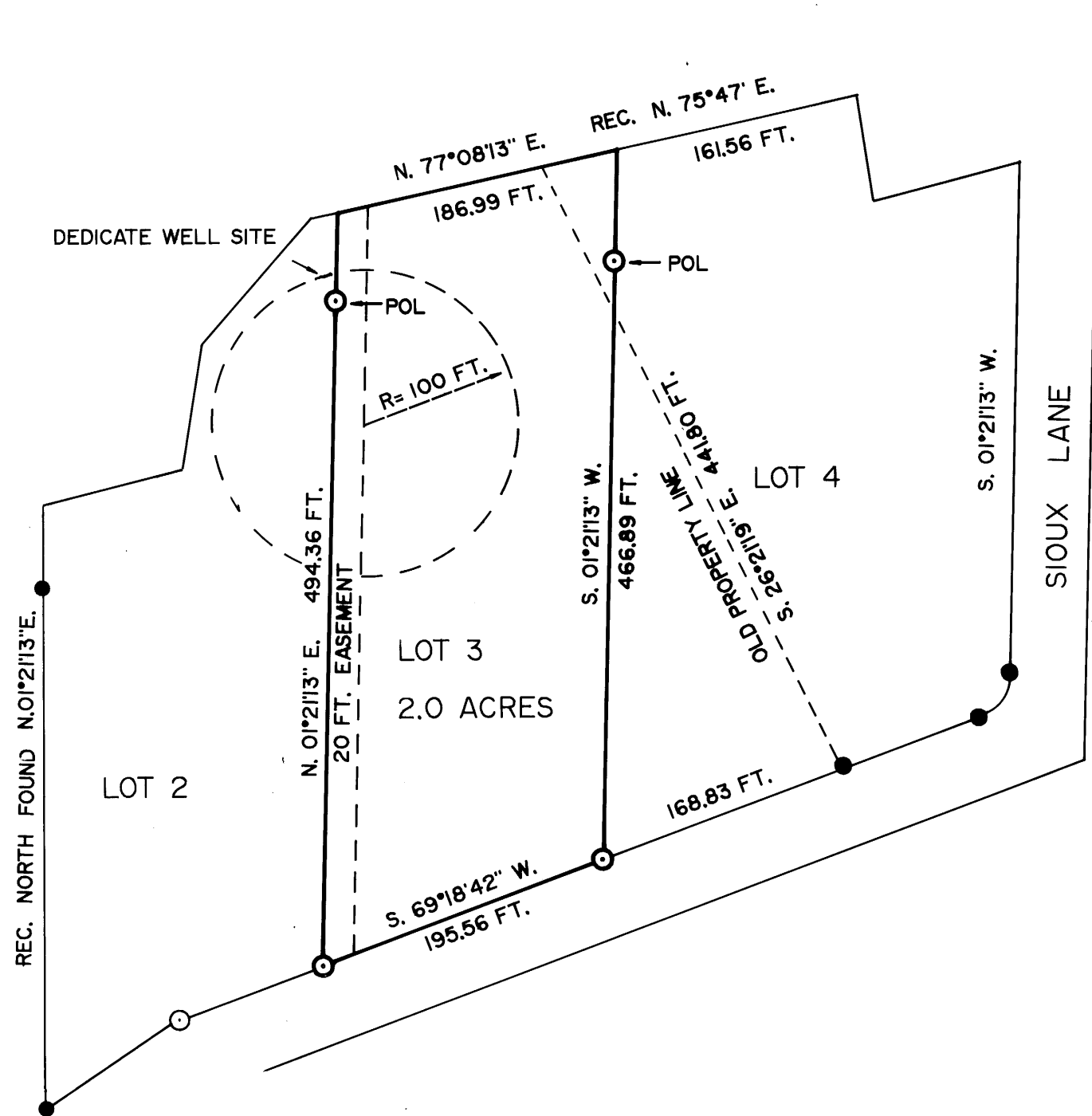
THIS MAP REPRESENTS A SURVEY MADE FROM EXISTING FIELD EVIDENCE IN CONFORMANCE WITH THE REQUIREMENTS OF CHAPTERS 16 AND 19, TITLE 55, IDAHO CODE. SURVEYED ON 10-10-1992.



COUNTY RECORDER'S CERTIFICATE

RECORDER OF LEMHI COUNTY
 TIME: 11:30 AM DAY: 20 MONTH: January 1993
 BK: 4 PG: 57A INST. NO. 217666
 RECORDER: Alberta H. Erickson
 BY: Deanne Gray

SEE RECORD OF SURVEY
 INST. NO. 185924



COUNTY COMMISSIONER'S ACCEPTANCE

THE FOREGOING PLAT WAS DULY ACCEPTED AND APPROVED BY THE BOARD OF COMMISSIONERS OF LEMHI COUNTY, IDAHO ON THIS ___ DAY OF _____ 199__.

ATTEST: CLERK

CHAIRMAN

COURTESY LEMHI TITLE

WADE SURVEYING
 505 GRANITE SALMON, IDAHO
 208-756-3070 83467