

CENTERLINE CURVE DATA

CURVE	RADIUS	Δ	TANGENT	LENGTH	CHORD
C-22	500.00'	19° 30' 00"	85.92'	170.17'	169.35'
C-27	300.00'	56° 00' 00"	159.51'	293.22'	281.68'
C-28	150.00'	27° 00' 00"	36.01'	70.69'	70.03'
C-29	150.00'	28° 00' 00"	37.40'	73.30'	72.58'

REAL POINT OF BEGINNING

COUNTY COMMISSIONER'S ACCEPTANCE

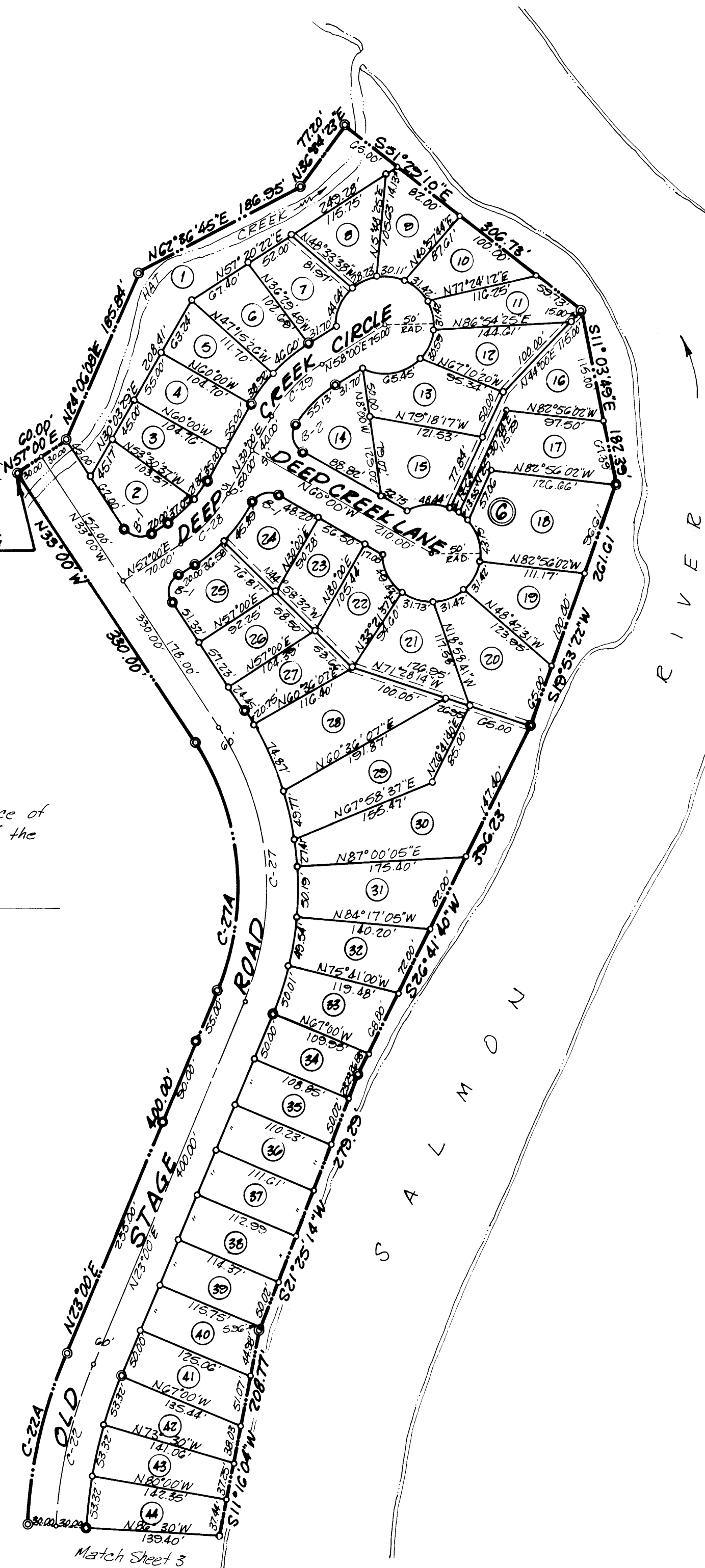
The foregoing plat was duly accepted and approved and maintenance of all public streets was accepted by the Board of County Commissioners of the County of Lemhi, Idaho on this 12th day of April 1976.

Eleanor Aldous
ATTEST: CLERK

Charles R. Kane
CHAIRMAN

CURVE DATA

CURVE	RADIUS	Δ	TANGENT	LENGTH	CHORD
C-22A	530.00'	19° 30' 00"	91.07'	180.38'	179.51'
C-27A	270.00'	56° 00' 02"	143.56'	263.90'	253.52'
B-1	20.00'	90° 00' 00"	20.00'	32.42'	28.28'
B-2	20.00'	92° 43' 50"	20.58'	32.37'	28.95'



#132627

COUNTY RECORDER'S CERTIFICATE

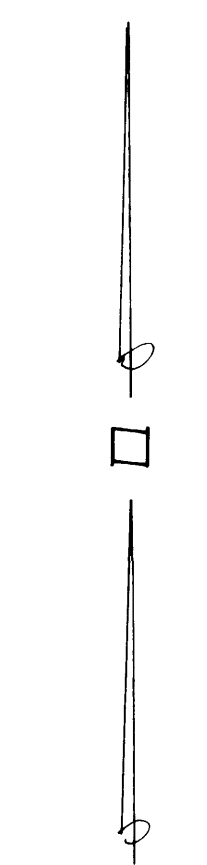
STATE OF IDAHO } ss.
COUNTY OF LEMHI }
This is to certify that the foregoing plat was filed in the Office of the Recorder of Lemhi County, Idaho on this 13th day of May 1976 at 9:23 A. M. and duly recorded in Plat Book 4 at Page 54-1

Eleanor Aldous
EX-OFFICIO RECORDER

LEGEND

- 5/8" x 30" Steel Bar set on Boundary and Block Corners
- 1/2" x 24" Steel Bar set on Lot Corners
- Boundary Line
- Lot Line
- - - Utility Easement - 5' wide
- Ⓐ Lot Number
- Ⓢ Block Number

johnston · couch
engineers · surveyors
salmon · idaho



Scale 1" = 100'

COURTESY LEMHI TITLE