

#131949

COUNTY RECORDER'S CERTIFICATE

STATE OF IDAHO } SS.
COUNTY OF LEMHI }

This is to certify that the foregoing plat was filed in the Office of the Recorder of Lemhi County, Idaho on this 29th day of Jan. 1976 at 9:58 A.M. and duly recorded in Plat Book 4 at Page 51-1

Eleanor Aldous
EX-OFFICIO RECORDER

COUNTY COMMISSIONER'S ACCEPTANCE

The foregoing plat was duly accepted and approved and maintenance of all public streets was accepted by the Board of County Commissioners of the County of Lemhi, Idaho on this 12 day of Jan. 1976

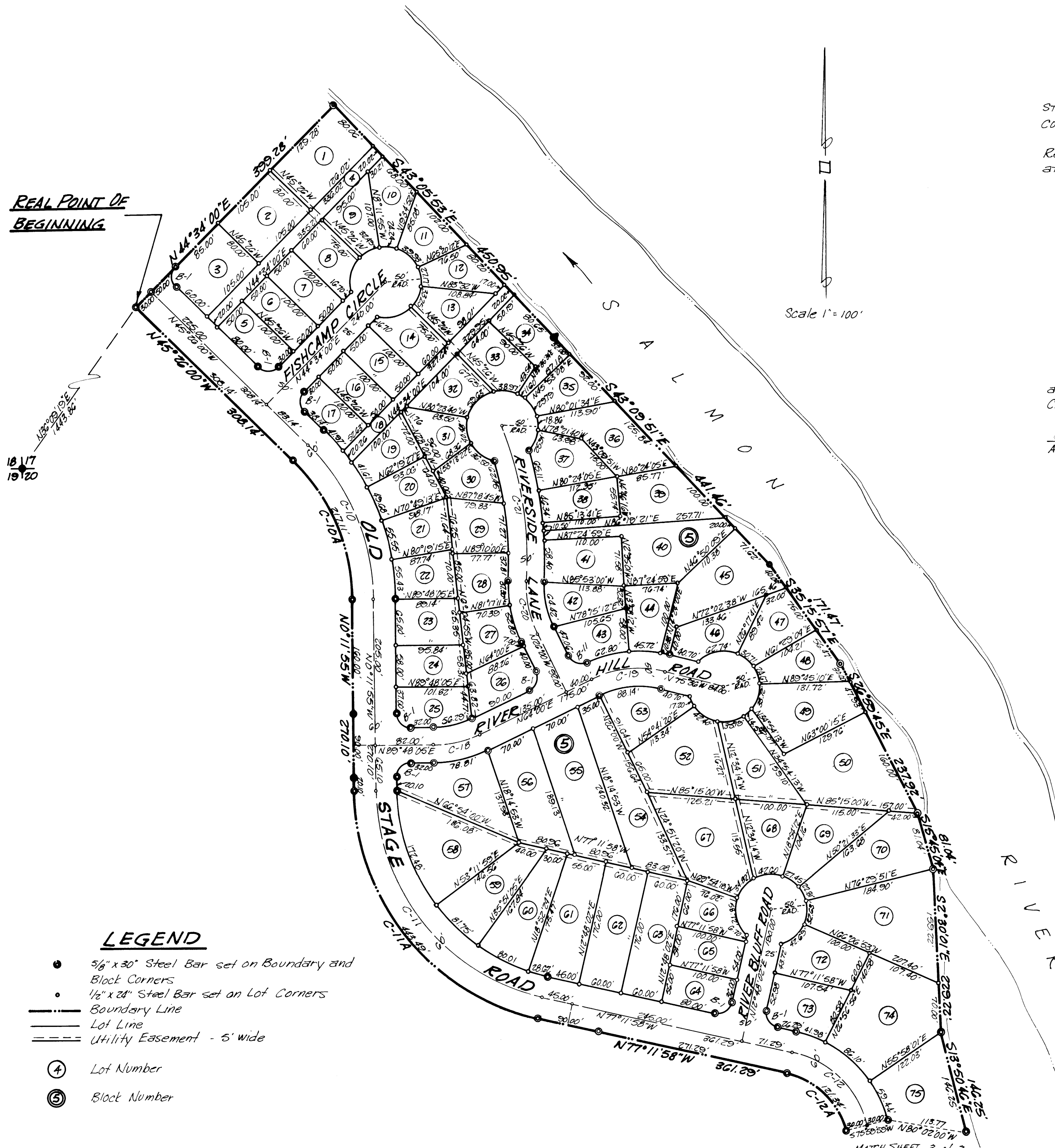
Eleanor Aldous
ATTEST: CLERK

Charles B. Kane
CHAIRMAN

REAL POINT OF BEGINNING

18 17
19 20

Scale 1" = 100'



CENTERLINE CURVE DATA

| CURVE | RADIUS | Δ | TANGENT | LENGTH | CHORD |
|-------|---------|-----------|---------|---------|---------|
| C-10 | 305.00' | 45°14'05" | 127.07' | 240.80' | 234.59' |
| C-11 | 300.00' | 77°00'03" | 238.63' | 403.18' | 373.51' |
| C-12 | 140.00' | 68°11'58" | 86.13' | 154.43' | 146.71' |
| C-18 | 150.00' | 25°48'05" | 54.36' | 67.56' | 66.98' |
| C-19 | 150.00' | 40°24'00" | 56.19' | 106.77' | 103.59' |
| C-20 | 150.00' | 29°30'00" | 39.48' | 77.23' | 76.38' |
| C-21 | 525.00' | 24°30'00" | 113.98' | 224.45' | 222.78' |

CURVE DATA

| CURVE | RADIUS | Δ | TANGENT | LENGTH | CHORD |
|-------|---------|-----------|---------|---------|---------|
| B-1 | 20.00' | 90°00'00" | 20.00' | 31.42' | 28.28' |
| B-11 | 20.00' | 88°31'50" | 19.49' | 30.90' | 27.92' |
| C-10A | 275.00' | 45°14'04" | 114.67' | 217.11' | 211.52' |
| C-11A | 330.00' | 77°00'01" | 262.50' | 443.49' | 410.86' |
| C-12A | 110.00' | 63°11'57" | 67.67' | 121.34' | 115.28' |

LEGEND

- 5/8" x 30" Steel Bar set on Boundary and Block Corners
- 1/2" x 24" Steel Bar set on Lot Corners
- Boundary Line
- Lot Line
- ==== Utility Easement - 5' wide
- ④ Lot Number
- ⑤ Block Number

johnston · couch
engineers · surveyors
salmon · idaho

COURTESY LEMHI TITL

STEELHEAD RUN AT SALMON RIVER SECOND ADDITION

Sheet 2 of 3