

COUNTY COMMISSIONER'S ACCEPTANCE

The foregoing plat was duly accepted and approved and maintenance of all public streets was accepted by the Board of County Commissioners of the County of Lemhi, Idaho on this ____ day of _____, 1974.

ATTEST: CLERK

Charles B. Kane
CHAIRMAN

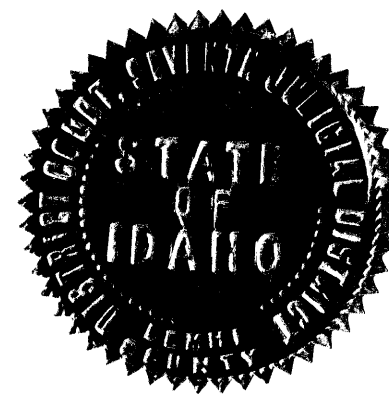
COUNTY RECORDER'S CERTIFICATE

STATE OF IDAHO } SS.
COUNTY OF LEMHI }

This is to certify that the foregoing plat was filed in the Office of the Recorder of Lemhi County, Idaho on this 27 day of Apr. 1974 at 2:35 PM and duly recorded in Plat Book 4 at Page 41.

DEPUTY

Eleanor Allous
EX-OFFICIO RECORDER

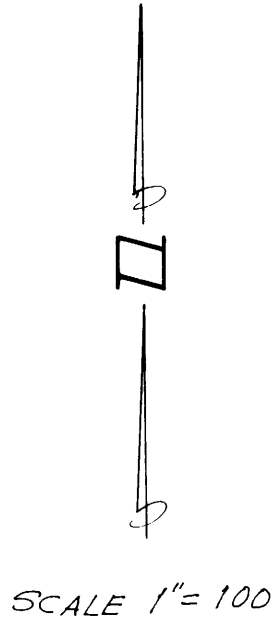
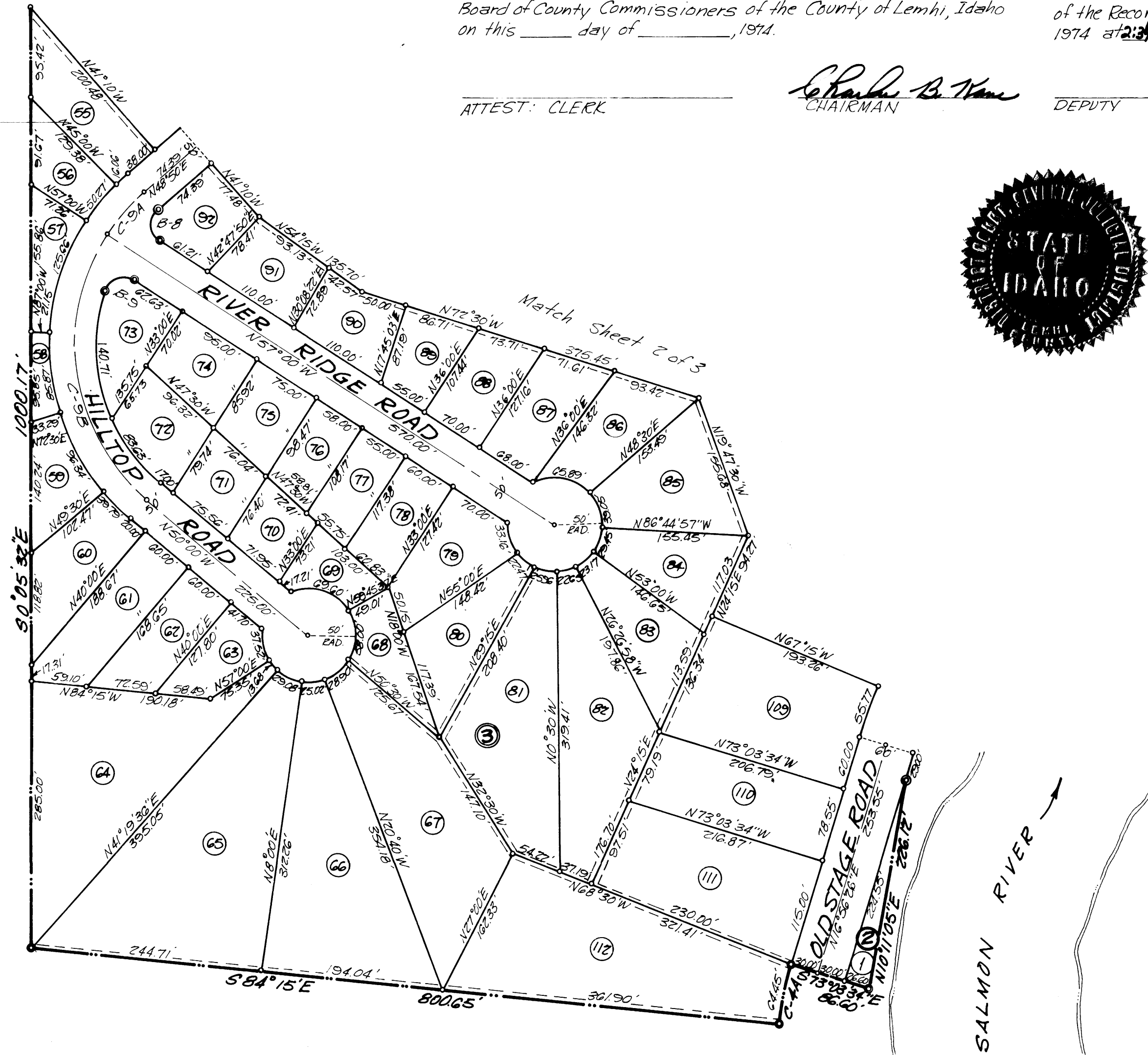


CENTERLINE CURVE DATA

CURVE	RADIUS	Δ	TANGENT	LENGTH
C-9A	215.00'	15°50'00"	29.90'	59.41'
C-9B	215.00'	83°00'00"	190.22'	311.45'

CURVE DATA

CURVE	RADIUS	Δ	TANGENT	LENGTH
C-4A	330.00'	11°11'26"	32.33'	64.45'
B-8	21.09'	105°50'00"	27.91'	38.96'
B-9	20.00'	105°20'59"	26.23'	36.71'



LEGEND

- 3/8" x 30" Steel Bar set on Boundary and Block Corners
- 1/2" x 24" Steel Bar set on Lot Corners
- Boundary Line
- - - Lot Line
- - - Utility Easement - 5' wide
- - - Match Line
- ① Lot Number
- Ⓢ Block Number

James Johnston
11/11/74

COURTESY LEMHI TITLE

STEELHEAD RUN AT SALMON RIVER